

PKI Plug

Installation Guide

Last updated: September 2010

CYGNACOM
S O L U T I O N S

This page intentionally mostly blank

Table of Contents

- 1 Introduction..... 4
- 2 Installation..... 4

Table of Figures

- Figure 1 PKIPlug Setup..... 5
- Figure 2 End-User License Agreement..... 6
- Figure 3 Setup Type selection 6
- Figure 4: PKI Plug Installation 7

1 Introduction

PKI Plug is a revocation status provider for Microsoft CAPI. It aims to influence CAPI path processing to cause shorter certification paths to be favored over longer certification paths. The public key from each certificate presented to PKI Plug is extracted and used to search the Root certificate store. If the public key is present in the Root certificate store and the presented certificate is not self-issued, the revocation status of the presented certificate is set to REVOKED. This precludes the usage of certificates issued for public keys that are already explicitly trusted. In cross-certified environments, this can have several positive effects including: improved performance by avoiding unnecessary revocation status determination operations for other certificates in path containing certificates PKI Plug “revokes”, improved usability by avoiding problems associated with sorting logic that sometimes favors longer invalid paths over shorter valid paths. Applications that obtain basic PKI functionality from CAPI will call the PKI Plug when validating a certificate. Many commonly used applications, such as Outlook, Internet Explorer and Infopath, use CAPI for PKI-related processing. The plug-in is installed using a basic Microsoft Installer (.msi file).

2 Installation

The PKIPlug is installed using a standard Windows installer. The installation package contains only one feature that may be installed.

To begin plug-in installation, double-click the PkiPlug.msi file. The following dialog will be displayed. Click the **Next** button.

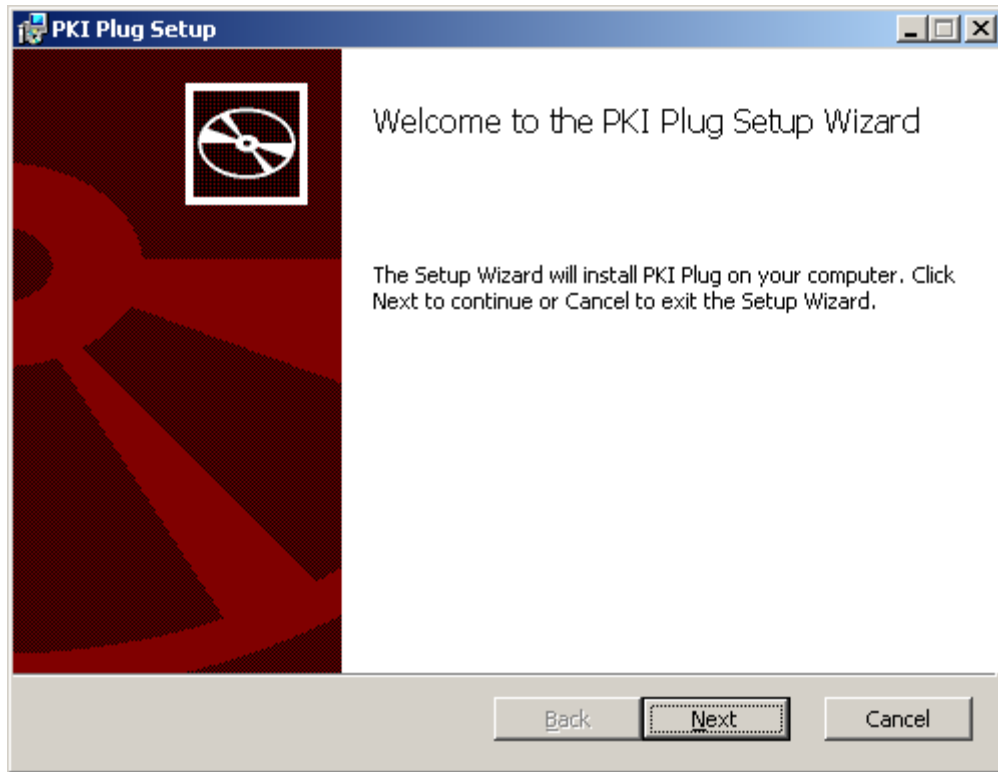


Figure 1 PKI Plug Setup

By default, the plug-in is installed to the following directory:

C:\Program Files\Cygnacom Solutions\PKI Plug\.

Accept the terms in the License Agreement, and then click the **Next** button.

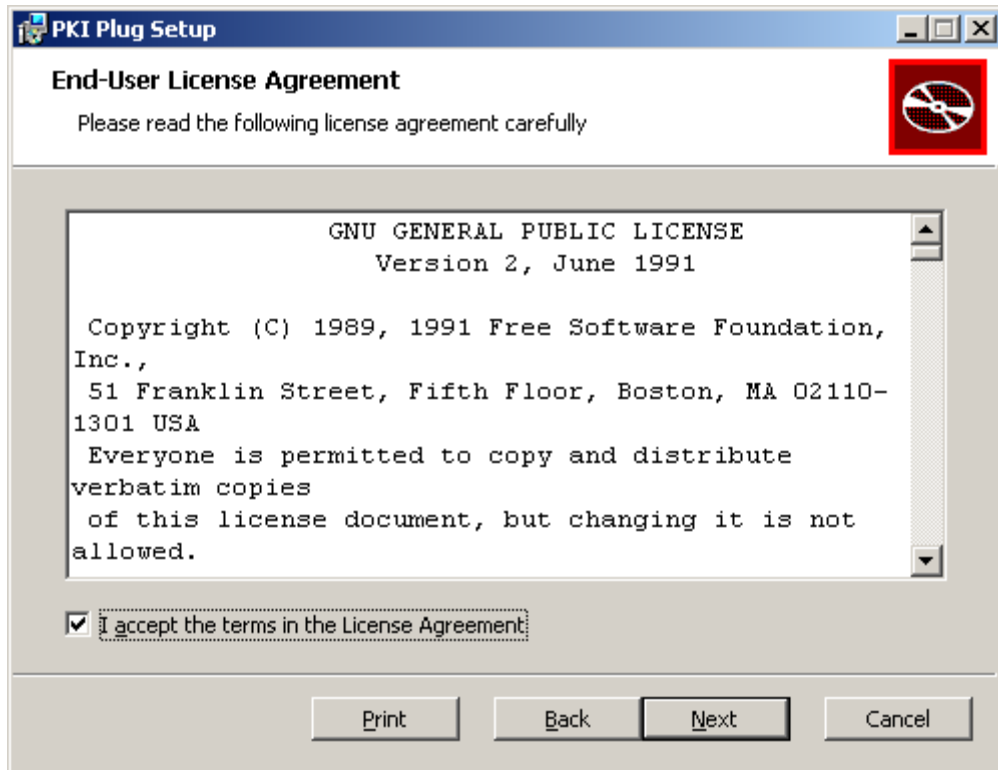


Figure 2 End-User License Agreement

Click the **Typical** button for typical configuration on the third dialog.

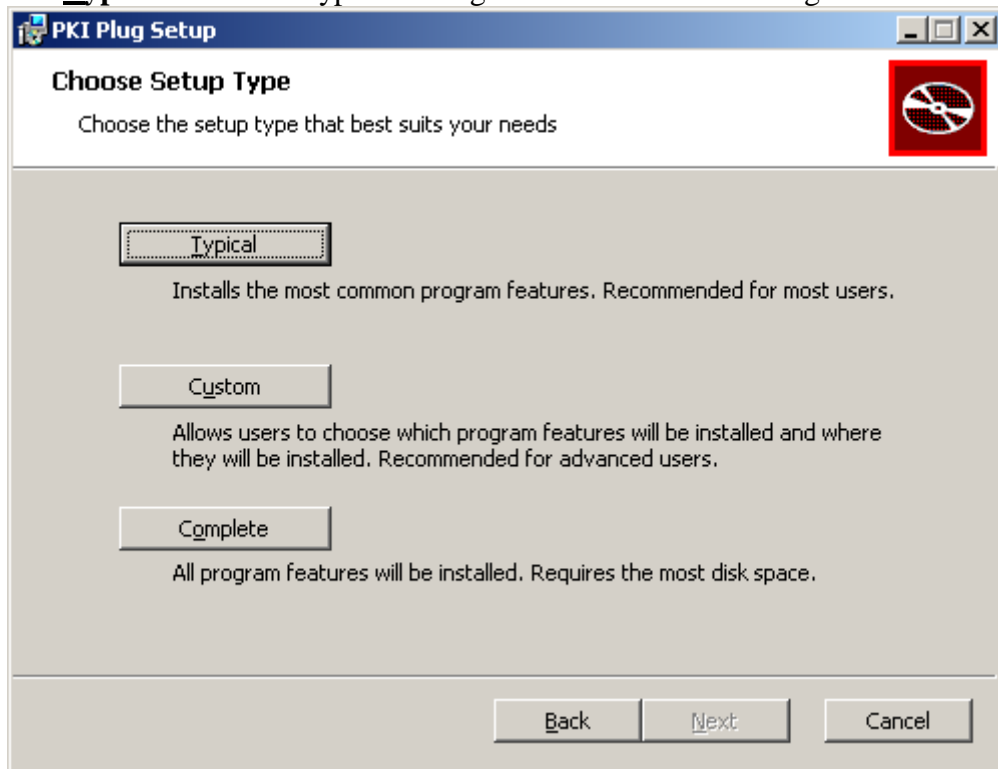


Figure 3 Setup Type selection

To complete the installation, click the **Install** button. This will copy the plug-in files to the selected file folder, set up the default registry configuration and register the plug-in with Microsoft CAPI.

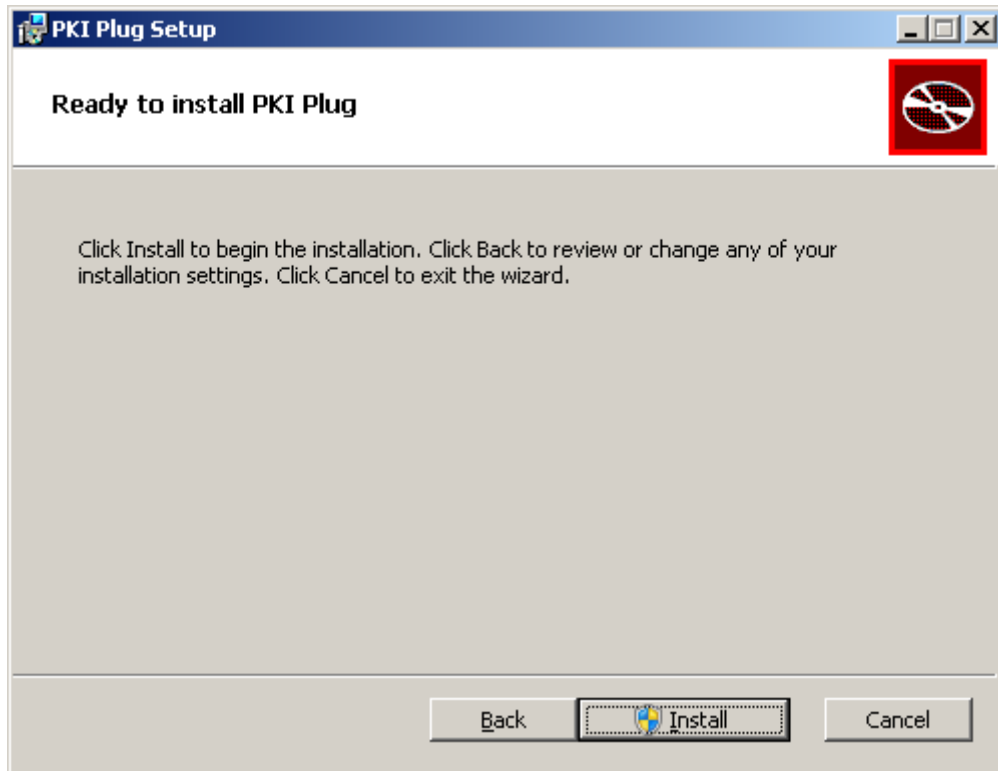


Figure 4: PKI Plug Installation

After the installation completes, click the **Finish** button (not shown). Close and restart any applications that use CAPI for PKI processing in order for the plug-in to be used.